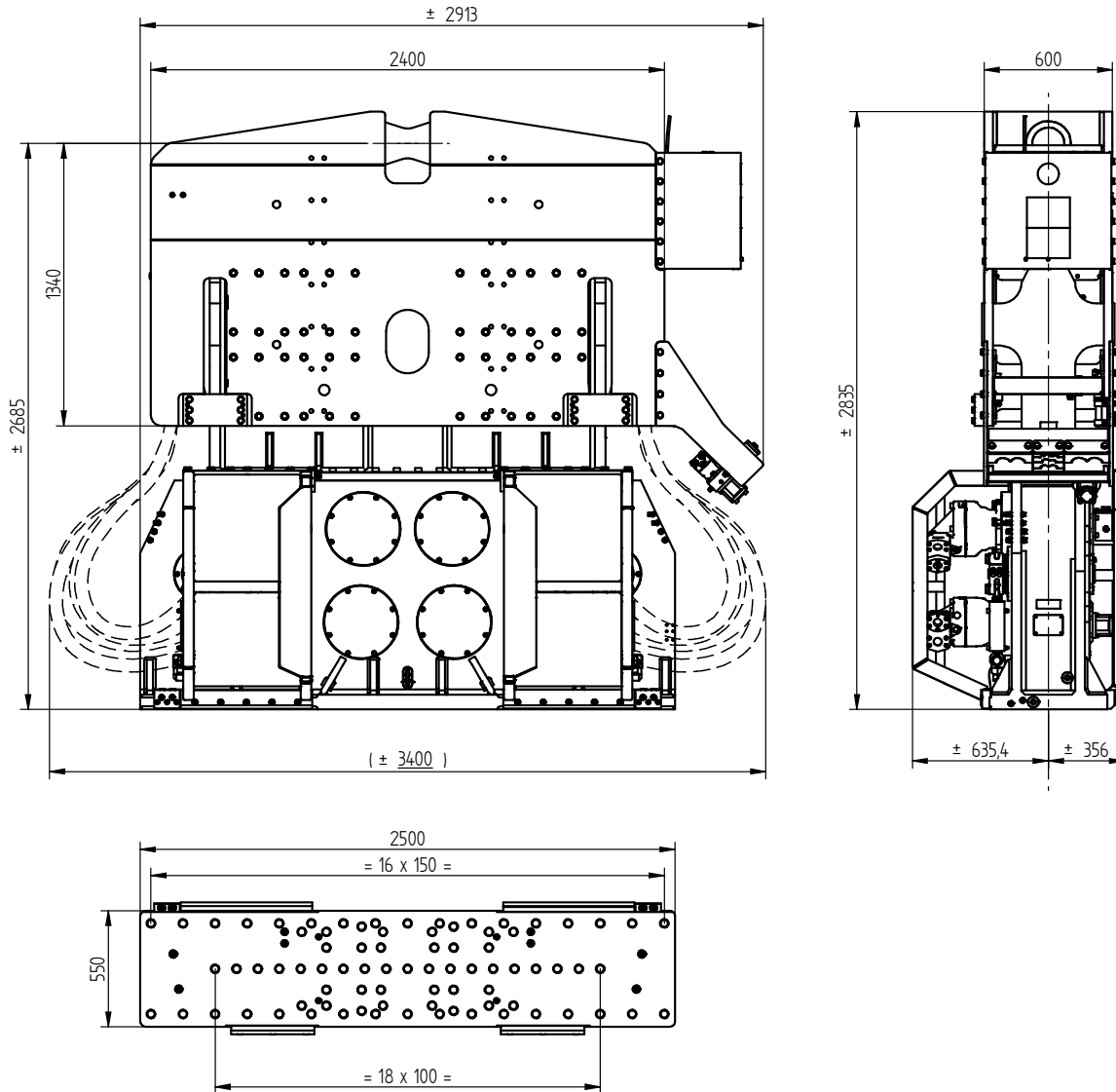




Specification sheet

PVE 70VM

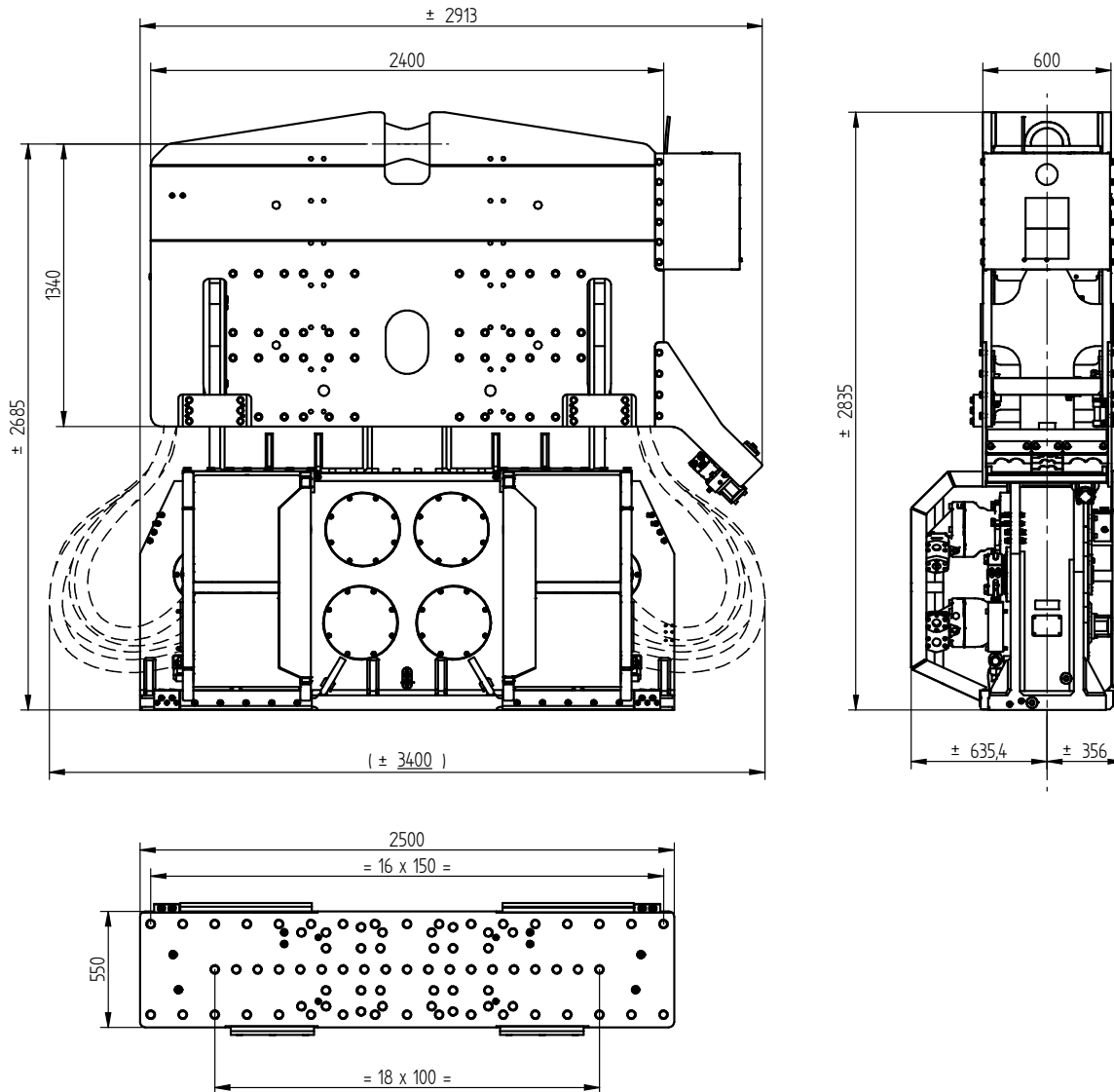
Vibro Hammer



Specifications :

PVE 70VM

Eccentric moment	0-70 kgm	Clamps:	
Centrifugal force	0-3070 kN	Double clamps	210TC (2x)
Max. frequency	2000 rpm	Transport weight per piece	1600 kg
Max. amplitude excl. 210TC (2x)	21 mm		
Max. amplitude incl. 210TC (2x)	14 mm		
Max. static line-pull	800 kN		
Max. pull-down	300 kN		
Max. operating pressure	350 bar	Powerpack:	
Max. oil flow	1580 l/min	Model	1600 series
Max. hydraulic power	922/1254 kW/HP		
Forced lubrication	yes		
Dynamic weight excl. 210TC (2x)	6800 kg	Hose set:	
Dynamic weight incl. 210TC (2x)	10000 kg	Length	45 m
Total weight excl. 210TC (2x) & hoses	10260 kg	Transport weight (±)	1970 kg



Technische Daten :

PVE 70VM

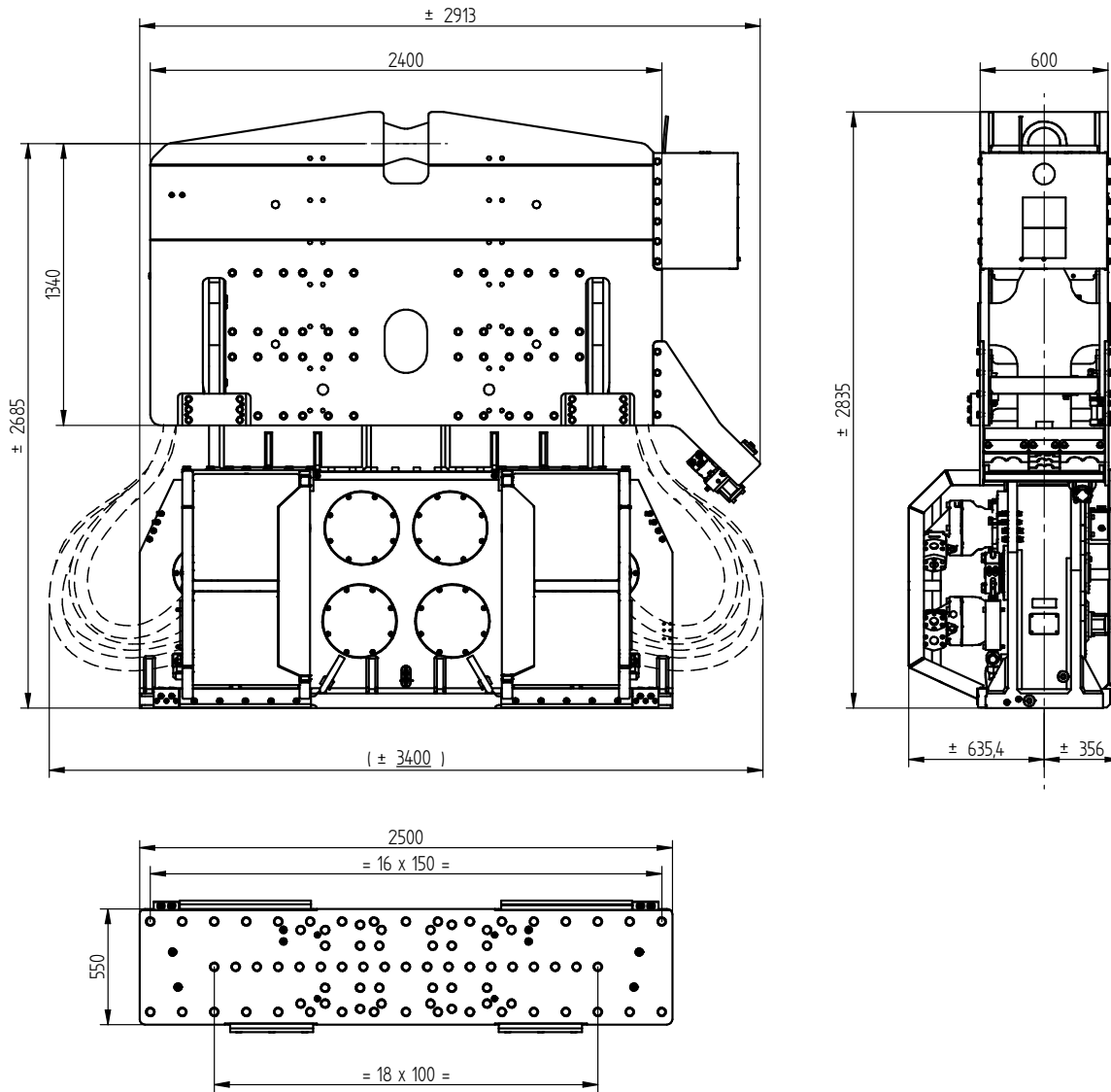
Statisches Moment	0-70 kgm	Klemmzange:	
Max. Fliehkraft	0-3070 kN	Rohrklemmzange	210TC (2x)
Max. Drehzahl	2000 rpm	Transportgew. pro Stück	1600 kg
Max. Amplitude ohne 210TC (2x)	21 mm		
Max. Amplitude mit 210TC (2x)	14 mm		
Max. Statische Zugkraft	800 kN		
Max. Vorspannung	300 kN		
Max. Betriebsdruck	350 bar	Aggregat:	
Max. Fördermenge	1580 l/min	Modell	1600 series
Max. hydraulische Leistung	922/1254 kW/PS		
Zwangsschmierung	ja		
Dyn. Gewicht ohne 210TC (2x)	6800 kg	Schlauchsatz:	
Dyn. Gewicht mit 210TC (2x)	10000 kg	Länge	45 m
Gesamtgew. Ohne 210TC (2x) & Schläuche	10260 kg	Transportgewicht (±)	1970 kg



Spécifications

PVE 70VM

Vibro Hammer



Spécifications

PVE 70VM

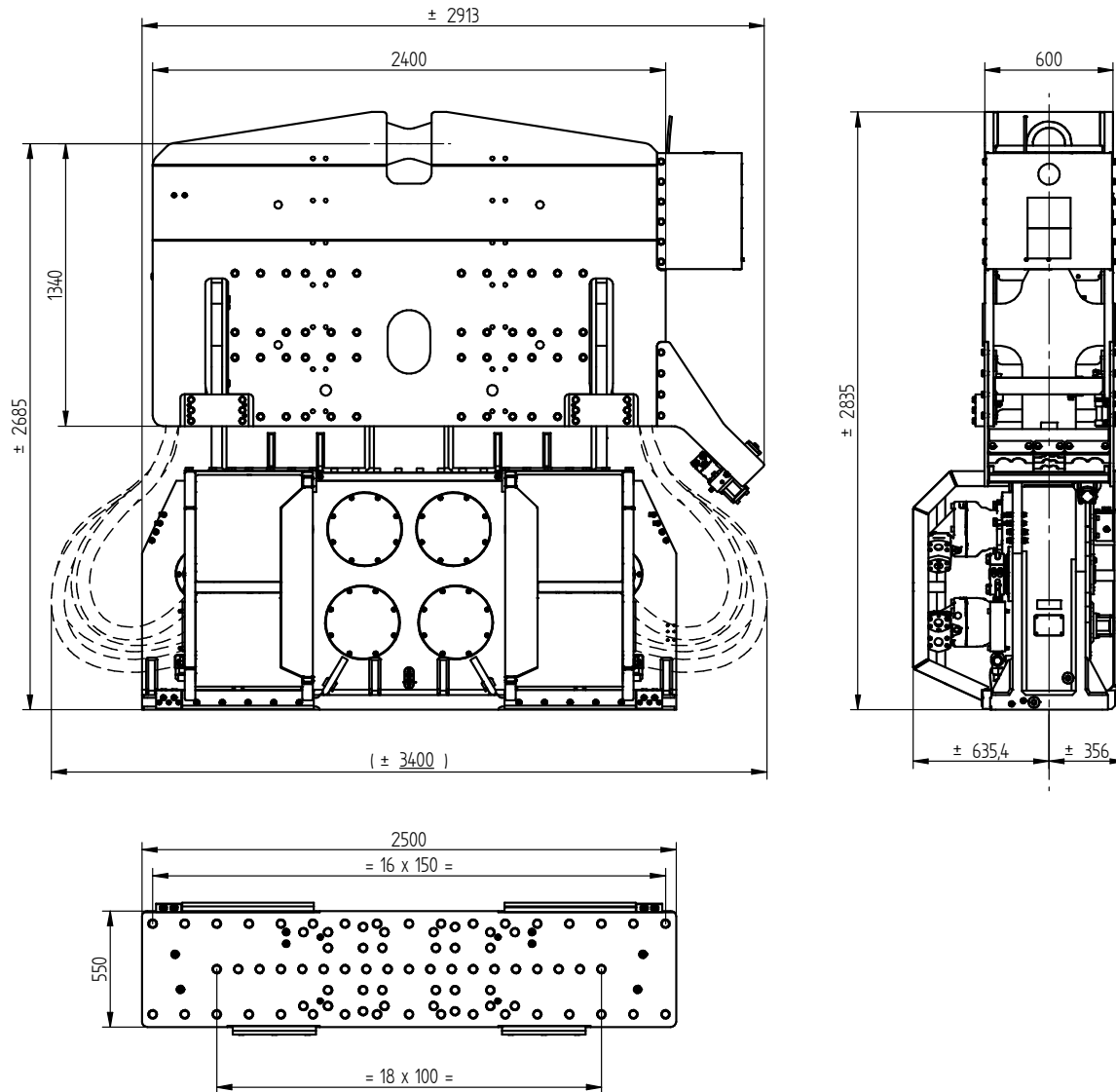
Moment excentrique	0-70 kgm	Pinces:	
Max. force centrifuge	0-3070 kN	Pince tube	210TC (2x)
Max. fréquence	2000 rpm	Poids de transport par pièce	1600 kg
Max. amplitude sans 210TC (2x)	21 mm		
Max. amplitude avec 210TC (2x)	14 mm		
Force de traction statique	800 kN		
Force maximale d'appui	300 kN		
Pression de travail max.	350 bar	Groupe hydraulique:	
Débit d'huile max.	1580 l/min	Modèle	1600 series
Puissance hydraulique max.	922/1254 kW/ch		
Huile lubrifiante	oui		
Poids dynamique sans 210TC (2x)	6800 kg	Jeu de tuyau:	
Poids dynamique avec 210TC (2x)	10000 kg	Longueur	45 m
Poids total sans 210TC (2x) & tuyaux	10260 kg	Poids de transport (±)	1970 kg



Specificaties

PVE 70VM

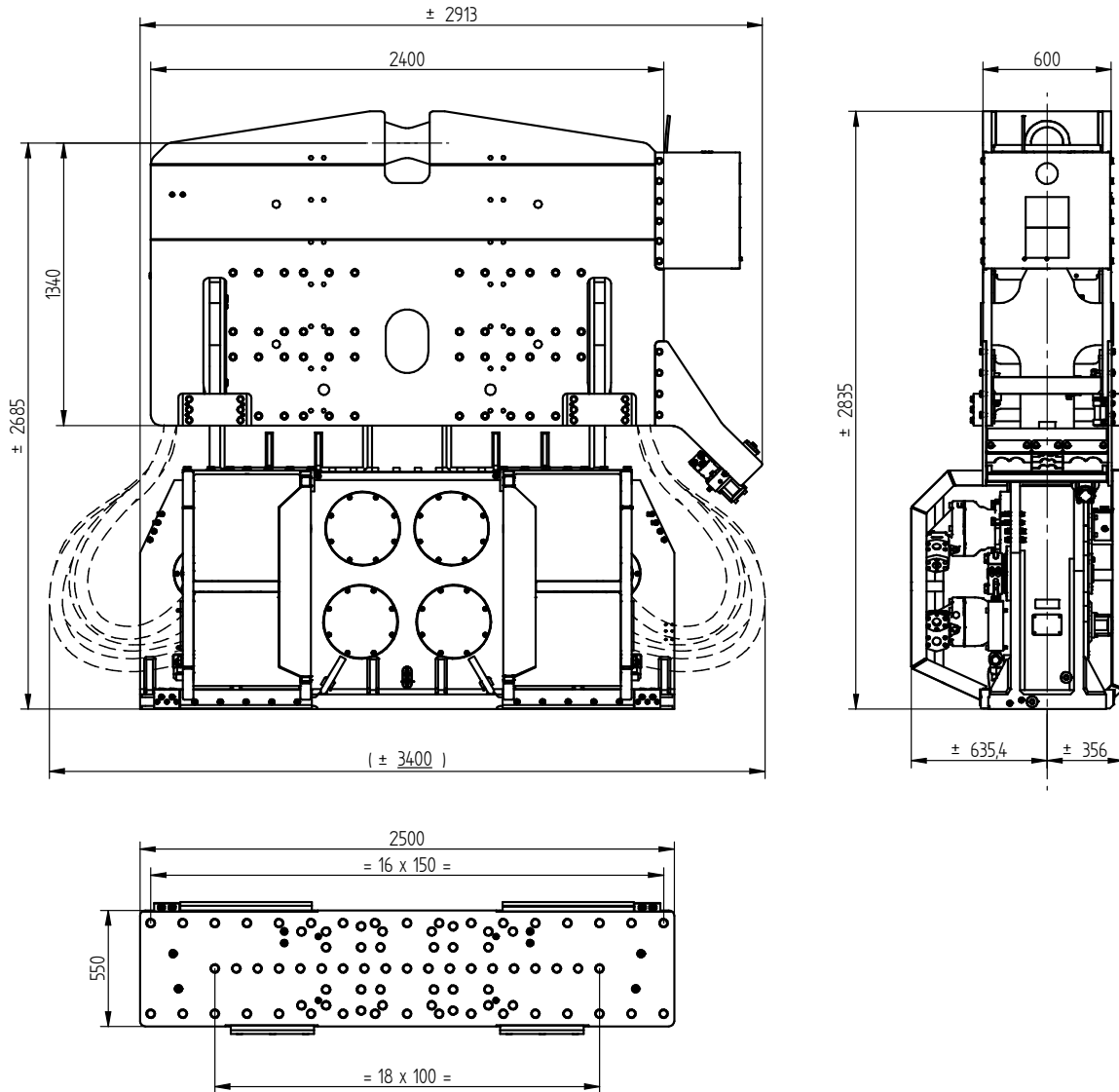
Vibro Hammer



Specificaties

PVE 70VM

Excentrisch moment	0-70 kgm	Klemmen:	
Max. centrifugaalkracht	0-3070 kN	Pijpenklem	210TC (2x)
Max. toerental	2000 rpm	Transportgewicht per klem	1600 kg
Max. amplitude excl. 210TC (2x)	21 mm		
Max. amplitude incl. 210TC (2x)	14 mm		
Max. statische trekkracht	800 kN		
Max. voorspanning	300 kN		
Max. werkdruk	350 bar	Aggregaat:	
Max. oliedoorstroming	1580 l/min	Model	1600 series
Max. hydraulisch vermogen	922/1254 kW/PK		
Geforceerde smering	ja		
Dynamisch gewicht excl. 210TC (2x)	6800 kg	Slangenset:	
Dynamisch gewicht incl. 210TC (2x)	10000 kg	Lengte	45 m
Totaalgewicht excl. 210TC (2x) & slangen	10260 kg	Transportgewicht (±)	1970 kg

**Especificaciones****PVE 70VM**

Momento excéntrico	0-70 kgm	Abrazadera:	
Fuerza centrífuga máxima	0-3070 kN	Abrazadera de tubo	210TC (2x)
Frecuencia máxima	2000 rpm	Peso de transporte por pieza	1600 kg
Amplitud máxima excluyendo 210TC (2x)	21 mm		
Amplitud máxima incluyendo 210TC (2x)	14 mm		
Estático tracción máxima	800 kN		
Compresión máxima	300 kN		
Presión máxima de trabajo	350 bar	Unidad de potencia:	
Flujo de aceite máximo	1580 l/min	Modelo	1600 series
Máxima potencia hidráulica	922/1254 kW/HP		
Lubricación forzada	si		
Peso dinámico excluyendo 210TC (2x)	6800 kg	Conjunto de manguera:	
Peso dinámico incluyendo 210TC (2x)	10000 kg	Longitud	45 m
Peso total excluyendo 210TC (2x) & mangueras	10260 kg	Peso de transporte (±)	1970 kg



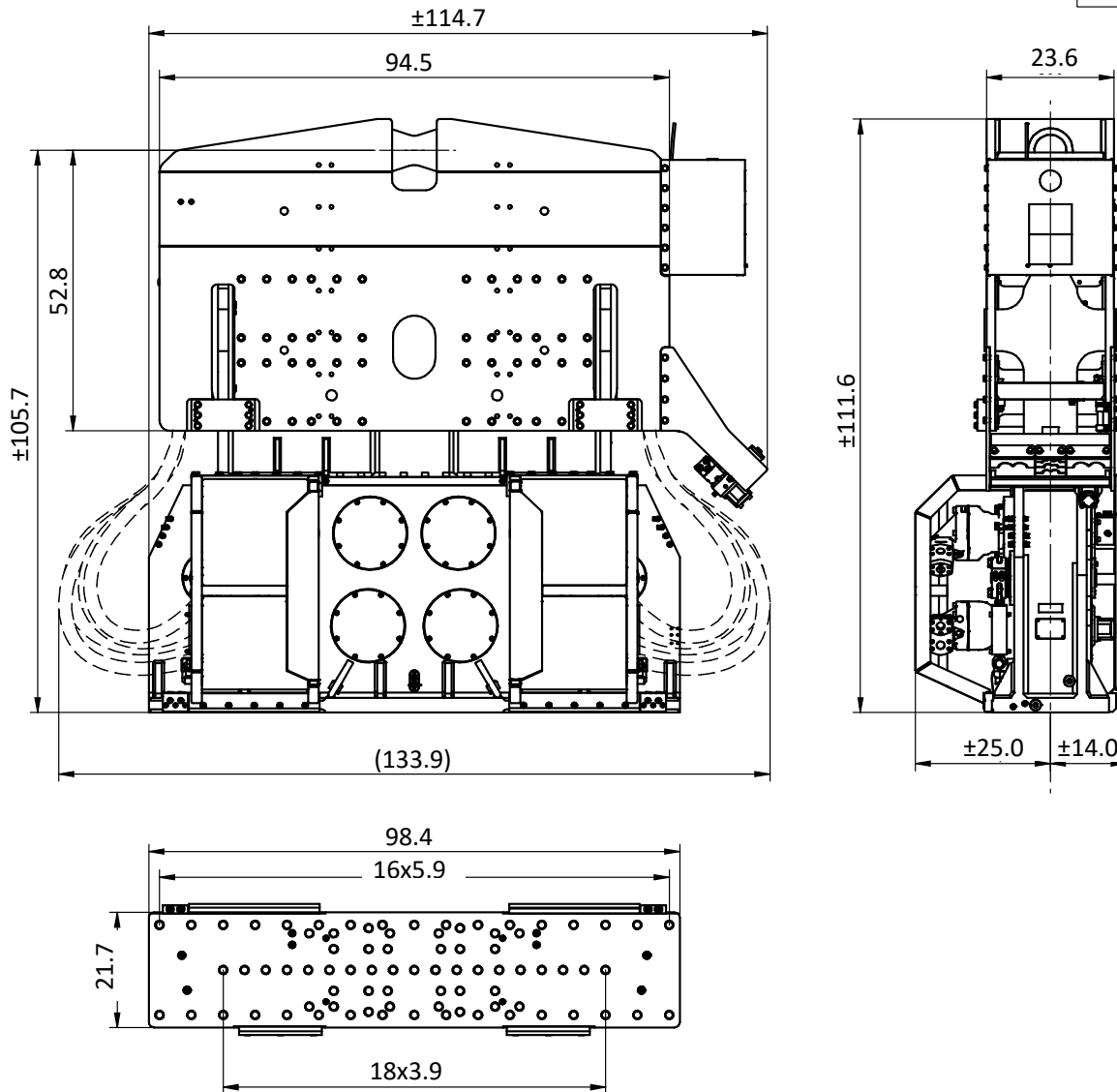
Specifications

PVE 70VM

Vibro Hammer

USA

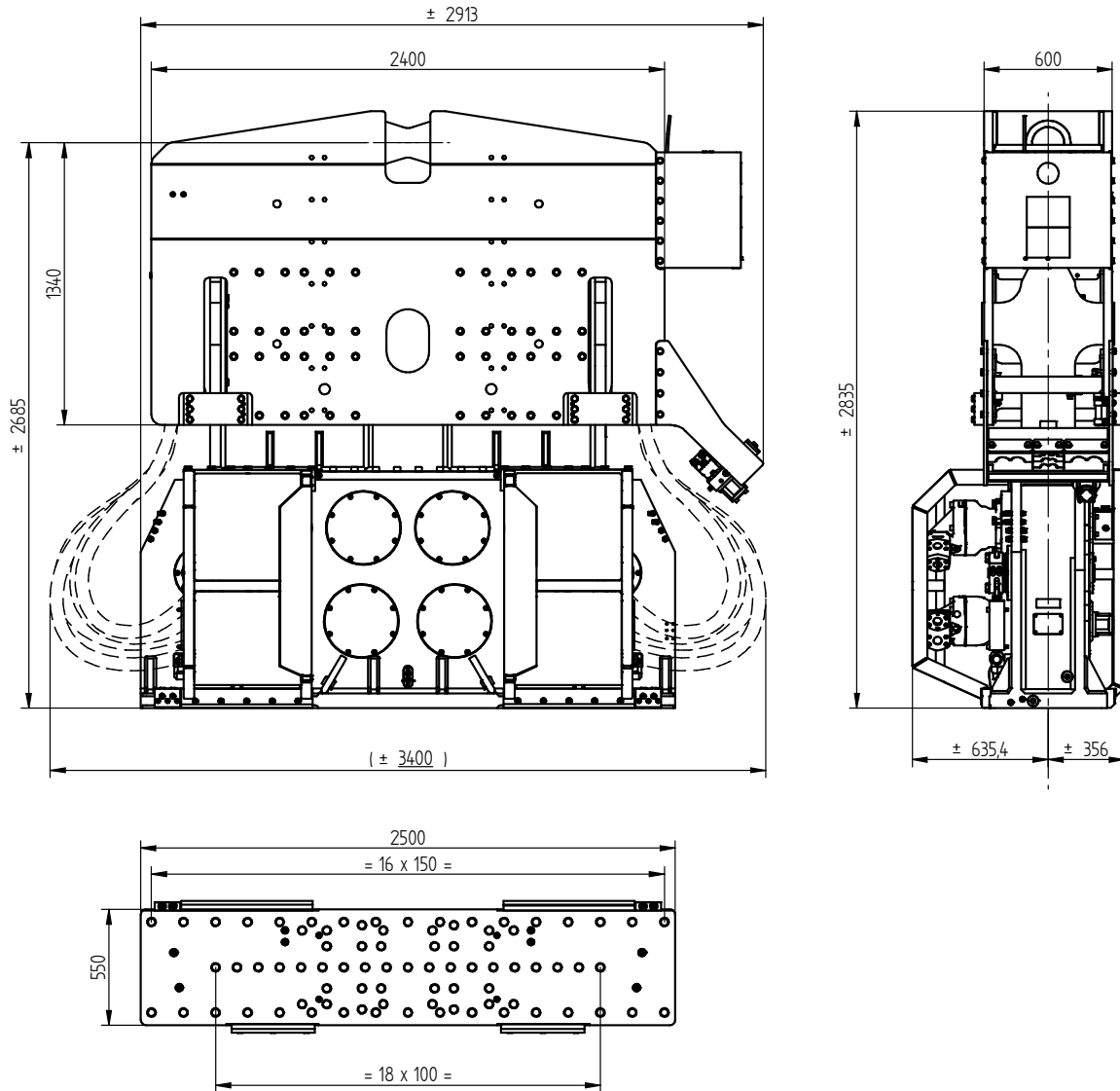
Dimensions in inches



Specifications		PVE 70VM	
Eccentric moment	0-6,076 in-lbs	Clamps:	
Centrifugal force	0-345 ton	Double clamps	210TC (2x)
Max. frequency	2,000 rpm	Transport weight per piece	3527,4 lbs
Max. amplitude excluding 210TC (2x)	0.83 in		
Max. amplitude including 210TC (2x)	0.55 in		
Max. static line-pull	90 ton		
Max. pull-down	34 ton		
Max. operating pressure	5,076 psi	Powerpack:	
Max. oil flow	417 gal/min	Model	1600 series
Max. hydraulic power	922/1254 kW/HP		
Forced lubrication	yes		
Dynamic weight excluding 210TC (2x)	14,991 lbs	Hose set:	
Dynamic weight including 210TC (2x)	22046,2 lbs	Length	148 ft
Total weight excluding 210TC (2x) & hoses	22,619 lbs	Transport weight (±)	4343 lbs



Specificatii PVE 70VM Ciocan cu vibratii



Specificatii :

PVE 70VM

Moment excentric	0-70 kgm	Clamps:	
Forta centrifuga maxima	0-3070 kN	Double clamps	210TC (2x)
Frecventa maxima	2000 rpm	Transport weight per piece	3527,4 lbs
Amplitudine maxima exclusiva. 210TC (2x)	21 mm		
Amplitudine maxima inclusivă. 210TC (2x)	14 mm		
Tractiune maxima statica	800 kN		
Trage în jos maxima	300 kN		
Presiune maxima de lucru	350 bar	generatoare:	
Debit maxim de ulei	1580 l/min	Model	1600 series
Puterea hidraulică maxima	922/1254 kW/HP		
Lubrifiere forzata	da		
Greutatea dinamica exclusiva. 210TC (2x)	6800 kg	Tip de furtun:	
Greutatea dinamica inclusivă. 210TC (2x)	10000 kg	Lungimea	45 m
Greutatea totala fara. 210TC (2x) si furtun	10260 kg	Greutatea de transport (±)	1970 kg